

ABBOTSFORD  
FAIRFIELD  
CLIFTON HILL  
ALPHINGTON  
BURNLEY/CREMORNE  
RICHMOND  
FITZROY  
COLLINGWOOD  
NORTH FITZROY  
NORTH CARLTON/  
PRINCES HILL



**YARRA  
ENERGY  
FOUNDATION**  
ANNUAL REPORT  
2015/2016

# Contents

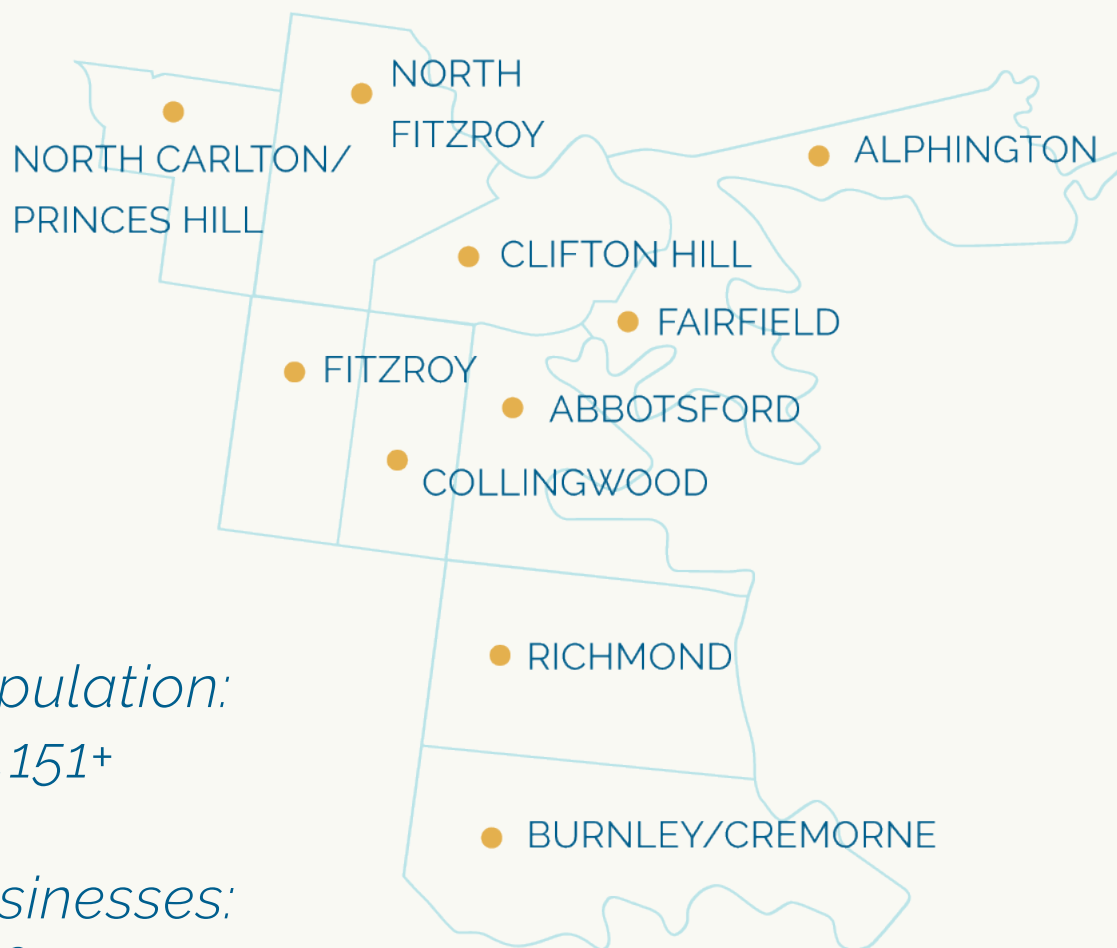
About the Yarra Energy Foundation	3 - 4
A Message from the Chair	5
A Message from the CEO	6
Board of Directors	7-9
Team	10
Acknowledgments	11
Volunteers	11
Highlights	13
Programs: Commercial	14- 15
Programs: Smart Solar for Yarra Schools	16 - 17
Programs: Residential	18
Programs: Low Income Retrofit Program	19 - 20
Advocacy: One Million Homes Alliance	21
Engagement: Digital	22
Engagement: Community and Stakeholder	23
Events	24
People and Culture	24
Measuring Carbon	25
Looking Forward	26
Audited Financial Tables	27 - 28

## About YEF

Yarra Energy Foundation (YEF) is an independent, for-purpose organisation with a huge ambition – to achieve **a zero carbon future in the City of Yarra**. YEF's goal is to engage and inspire people who live and do business in the City of Yarra to take practical steps towards this goal.

Established by Yarra City Council in 2010, YEF receives critical core funding support from the Council and is governed by an independent board of highly skilled and experienced professionals.

## Our Community



Population:  
89,151+

Businesses:  
13,600+

The City of Yarra is primarily young, single, educated, and affluent, with the largest age group being 25-29 year olds, followed by 30-34 year olds. However, Yarra has a significant population of vulnerable residents. 10.8% of residents live in social housing, 18% of households are considered low income, and 24% of are over the age of 50. Yarra is culturally diverse, with 23% of residents coming from non-English speaking backgrounds. Annually, the City of Yarra emits 924kTCO<sub>2</sub>.



## **Our vision for the future: Yarra as vibrant zero carbon community.**

*A vibrant, zero carbon community that is diverse, participatory and sustainable. Businesses, homes, schools, community facilities, our transport and waste systems are efficient and effective and have a positive impact on the environment. People care about and contribute to their community and the local environment.*

## **Our purpose: To inspire and empower the Yarra community to build a vibrant zero carbon future.**

*We inspire the community by sharing stories, building networks and demonstrating what is possible in building a vibrant zero carbon future. We empower the community by developing and providing pathways and solutions that enable all residents, businesses and other organisations to move towards a zero carbon city, through energy efficiency and renewable energy uptake.*

### **Our values:**

#### **Engagement**

*We are positive and friendly. We can only achieve our Vision of a zero carbon community with our community's help. So we build relationships to help others understand the significance of our work, and our enthusiasm and clarity inspires them to get involved. People like working with us because we are welcoming, respectful and easy to understand.*

#### **Creativity**

*We make things better. We find the best ways to solve problems, and inspire and empower others to reduce carbon emissions. Sometimes we bring back an old idea that works, and sometimes we find new solutions to our challenges. We are agile and easily adapt to change if it helps us fulfil our purpose.*

#### **Credibility**

*You can count on us. We are informed, honest and we believe in our purpose. So you can rely on us to keep you up to date, tell you the truth, and act on our word.*

#### **Audaciousness**

*We are bold and progressive. We have the courage to speak up when something needs to be questioned and improved in pursuit of our vision. We are here to make a big, positive impact in our community, and on the environment, so we help others see what needs to change. We balance this with respect and a sense of humour that helps people listen to what we are saying.*

### **Our Programs:**

*We deliver practical programs and pathways to solutions that help our community reduce energy use. Working with residents, businesses and community groups we develop initiatives that aim to make a carbon free future accessible for all.*

**Find out more about our programs and current work at [yef.org.au](http://yef.org.au)**

# A Message from the Chair



On behalf of Yarra Energy Foundation (YEF), I am pleased to share with you our Annual Report for the 2015-16 financial year.

This has been a very positive year for Yarra Energy Foundation and we continued our track record in developing and delivering strong and successful commercial programs. Our ability to develop and mobilise carbon reduction programs is going to be more important than ever with the strong outcomes of the 21 Conference of Parties to the UN Framework Convention on Climate Change (COP21) in Paris that has resulted in commitments by a large number of countries to set carbon reduction targets.

Globally we will need to deliver new financing solutions, business models and develop technologies to ensure we are able to meet the targets that are set. As well as action at the global level and the national level, the role at a local government level is important to ensure that all stakeholders in the community are assisted in this transition.

Some of the new ways YEF delivered these outcomes last year was through the following activities.

\* The low income retrofit program. A successful pilot was established that resulted in 50 at need residents accessing the programme and this was supported by a group of valued partners.

\* The solar PV bulk buy programme has had great success

\* A solar PV and energy efficiency program to assist schools to transition to a lower carbon footprint.

The programmes have delivered costs benefits for the community in the City of Yarra as well as environmental outcomes. The programmes developed are replicable and we will be leveraging this strong foundation to roll out further similar programmes in coming years.

I would like to acknowledge the Yarra City Council for their tremendous support for their shared vision of achieving a carbon neutral city. Our success is largely attributable to the passionate and dedicated efforts of the YEF team and our valued partners. I would like to offer my deep gratitude to all involved throughout the year for their continued commitment, enthusiasm and hard work.

On behalf of the Board, I would also like to thank the YEF team that have been so passionate in delivering great outcome for the community.

In 2016/17, I look forward to working with YEF staff, directors, stakeholders and the community to move closer to our goals in achieving a carbon neutral city.

Jennifer Lauber Patterson, Chairperson

## A Message from the CEO



Since its inception, the Yarra Energy Foundation (YEF) has set out to identify pathways towards a zero carbon future. In a rapidly changing political climate these pathways can be obscured and challenging to navigate. However, technology is quickly advancing and in many ways, providing a welcome impetus to keep us travelling on our path.

We exist to engage and inspire people who live and do business in the City of Yarra, to take practical steps towards a zero carbon city.

Yarra Energy Foundation has done the groundwork, articulated a clear strategic direction and has a positive track record in developing programs, which is positioning it well with the growing funding opportunities available in the energy efficiency and renewable energy space.

In the first half of 2016 we developed a comprehensive strategic plan, informed by an updated Stationary Emissions profile. This is supported by a comprehensive 3 year fundraising strategy. This fundraising strategy is aligned to our strategic program priorities and outlines a plan that ensures YEF will be an effective and sustainable organisation over the next three years.

We outlined a plan to maintain and grow our existing Commercial and Residential programs, and use specific projects like energy efficiency information in Vietnamese, and our retrofit program to attract funding from the philanthropic sector. We will also continue to refine and strengthen our new program areas to seek new funding and significantly accelerate our carbon reduction.

The delivery by the State Government of both 'Victoria's Renewable Energy Roadmap' and 'Saving energy, growing jobs: Victoria's energy efficiency and productivity statement', has provided clarity on policy direction for the State, and delivered a range of emerging funding opportunities that have been absent in the sector for a number of years.

We were able to deliver two substantive funding applications to the first round the New Energy Jobs Fund, and will return to round 2 with reworked submissions, as well as ensuring we are well placed to apply for funding expected as a result of the Energy Efficiency Productivity statement. The preparation of these initial applications connected us to a prominent development in Yarra, and resulted in helping seed additional carbon reduction measures previously absent from the development.

Within YEF, we have built expertise in program design, delivery and engagement. Claire Havens is leading our work in the energy efficiency and renewable space for our residents, with a primary focus on the Low Income Retrofit program (LIRP). Our Commercial program is expanding rapidly, and our engagement with our community is growing in leaps and bounds, as Jacqui Hagen guides our new online presence into life.

Our priority areas for the coming year remain ambitious and will see YEF increasing its capacity to engage and talk with, amongst our key audiences, you. We will continue to participate in advocacy work that helps realise policy reform, and we will ensure we deliver programs and outcomes that help build momentum towards our zero carbon goal.

All in all 2015/16 has been an important year for the Yarra Energy Foundation. Our team is looking forward to continuing to build on our solid foundations and deliver strong results for the community. There is a lot to look forward to and we hope that you will join us!

Sarah Johnson, CEO

# Board of Directors



*Jennifer Lauber Patterson - Chair*

Jennifer is the Co-Founder and Executive Director of Frontier Energy and is the Head of the Climate Markets and Investment Association for Australia and New Zealand. Jennifer was formally in senior executive roles in the electricity industry prior to setting up ANZ's Electricity and Environmental Markets Business and National Australia's Bank (NAB) Treasury Solutions Business. Jennifer has been named one of the 100 Global Sustainability Leaders by ABC Carbon in 2012 and 2013.



*Gerard Brody - Deputy Chair*

Gerard is currently the Chief Executive Officer of the Consumer Action Law Centre, a campaign-focused consumer advocacy organisation. Gerard has been a consumer lawyer and advocate for over 10 years, and previously worked with the Brotherhood of St Laurence. Gerard has a Masters in Public Policy and Management, Bachelor of Laws (Hons) and Bachelor of Arts (Hons) from the University of Melbourne.



*Cr Roberto Colanzi*

Roberto was first elected to Yarra Council as a representative of the Nicholls Ward in 2012. He is the Chair of Council's Business Advisory Group, a member of Council's Audit Committee, and Council's delegate to the Municipal Association of Victoria, and the Metropolitan Transport Forum. He is a highly experienced and skilled strategy and policy manager, and industry analyst. His range of skills and experience include: industry, economic and marketing analysis; finance and strategic systems analysis; project management and planning; and is skilled in a range of quantitative research methods. He has worked with a number of leading methodologies that have focused on improving the efficiency of working capital, increasing company and client profits, reducing cost structures, generating sales and expenditure forecasts, and ultimately leading to improving returns on investment.



*Cr Misha Coleman*

Misha was elected to the City of Yarra as a Greens Party Councillor in 2012. She has a Master's degree in Environmental Law and was the Country Manager for the Australian Government's international science and agricultural program, at the Australian Embassy in Vietnam from 2004-2007. Misha is a qualified Company Director and has published on a range of subjects, including having authored books on monitoring and evaluation in the mining and resource sector.





*Guy Wilson-Browne*

Guy is currently the Director City Works & Assets for Yarra City Council, responsible for the overall planning, provision and maintenance of public infrastructure for Yarra City Council. Guy is a Fellow of the Australian Institute of Company Directors and is also a Board Director for Westernport Water. He has more than 15 years' experience as a senior manager in the public infrastructure sector. His qualifications include a degree in Civil Engineering and Graduate Diplomas in Business Administration (Leisure & Tourism) and Commercial Law.



*Inna Kulawiec*

Inna is Commercial Contracts Manager at City Facilities Management where she is responsible for developing and execution of commercial strategy with national partners and contractors. Prior to this Inna spent five years at PwC in project management and transaction roles, before moving into a commercial management role with AEMO where she led the negotiations of long term multi-million dollar infrastructure deals. At Alcoa Inna led energy procurement and commercial services functions supporting manufacturing facilities in Victoria and New South Wales.



*Ken Guthrie*

Ken has over 30 years experience working in sustainable energy, renewable energy and energy efficiency. Leading the development of international standards on solar energy, Ken represents Australia as the Deputy Chair of the International Energy Agency Solar Heating and Cooling Program. He has provided sessional lectures to Masters students at RMIT on Solar Energy Technology and Market Transformation, and has provided advice across the Victorian Government regarding market and regulatory programs to support the deployment of Sustainable Energy Technologies.



*Eyal Halamish*

Eyal is currently the CEO of OurSay, an organisation which helps leaders level with their communities with easy-to-use technologies. Eyal is a World Economic Forum Global Shaper, Sandboxer, Unreasonable Institute Fellow and Centre for Sustainability Leadership Fellow. He also sits on the board of Code for Australia.

*Brendan Brown*

Brendan is the Company Secretary of Yarra Energy Foundation Limited and is a Chartered Accountant.



*(R) Geoff Mabbett*

---

Geoff is the Director and Owner of Lime Consulting, specialising in executive coaching, organisational alignment and strategy development. He is also the Chairman of the Advisory Board of the Net Balance Foundation, Chairman of the Sustainable Forestry Council and the Victorian Director of LSI Consulting. His executive career included 10 years as a Chief Executive in the utilities and environmental services industries including the inaugural CEO of Sustainability Victoria from 2005 to 2007.

*(R) Dr. Katherine Dean PhD MAICD*

---

Katherine is founder and director of D3 Consulting Group. She is recognised as one of Australia's leading scientists in the sustainable materials field with over 20 years of experience in technology innovation, strategy, business and global engagement within the materials R&D sector.

*(R) Dr. Peter Christoff*

---

Peter is Coordinator of Environmental Studies within the Melbourne School of Land and Environment at the University of Melbourne. He is also a Visiting Research Fellow at the Monash Sustainability Institute. He is a Board member and a former Vice President of the Australian Conservation Foundation. He was also formerly a member of the Victorian Premier's Climate Change Reference Group, the Victorian Ministerial Reference Council on Climate Change Adaptation, and Assistant Commissioner for the Environment (Victoria).

*(R) Cr Sam Gaylard*

---

Sam has been a Greens Councillor representing the Nicholls Ward (North Carlton, North Fitzroy, Princes Hill, and parts of Fitzroy, Clifton Hill and Collingwood) since 2008. He is a member of Council's Planning, Environment and Infrastructure Committee and of the Bicycle Consultative Committee and the Community Gardens Advisory Committee and is a founding councillor representative on the Yarra Energy Foundation. Cr Gaylard believes local government can play a pivotal role in tackling climate change and supporting our community's transition to a sustainable and resilient future.

Previously, he has worked as a social worker, a manager at the Fitzroy Council, an executive officer in a development education organisation, an industrial officer at the ASU servicing the Community and Local Government sectors and has worked for a Greens MP.

*(R) Scott Chapman*

---

Scott is CEO of the Royal Flying Doctor Service (Vic). He is also the Chair of Outdoors Victoria, City Harvest and Anglesea Ambulance Auxillary. He previously worked in local governments throughout Melbourne as Director of various departments, including Commerce & Marketing, Strategy, and Community Services

# Team



*Sarah Johnson - Chief Executive Officer*

Sarah has over 16 years experience in the conservation sector, and has spent the last 10 years managing, imagining, designing, delivering, and implementing innovative programs to enable change. Sarah ran the Banksia Award winning GreenHome sustainable living program, and the Melbourne Award winning SmartBlocks. Sarah has a BA (Hons) and MA Environmental Science from Monash.



*Ned Halliday, YEF Solar Projects Manager - Commercial*

Ned is a highly skilled project manager with over thirteen years' experience. Ned's career includes consulting at global engineering giant URS Corporation, where he led the delivery of projects and engineering services across Australia and the United States.



*Claire Havens - Solar Projects Manager*

Claire has a passion for working on projects that both enhance urban livability, and reduce carbon emissions; she revels in the intersection between building design, sustainable transportation, and renewable energy. She believes that a climate friendly city is also a resilient, vibrant, innovative, and compassionate city. She is currently running YEF's low income energy retrofit program in the City of Yarra.



*Jacqui Hagen - Digital Engagement Manager*

Jacqui is a designer, editor and writer making things and telling stories for good organisations across Australia. Jacqui has worked for studios in Melbourne on diverse projects involving exhibition design, publishing and service design, as well as for a number of arts and environmental organisations such as The Wheeler Centre, Australian Poetry, and Landcare Australia. Jacqui shaped innovation lab The Field Institute from its inception as Digital and Publications Coordinator, where she edited a few books exploring technology and sustainability within the food system.

# Acknowledgments

The Yarra Energy Foundation would like to thank everyone who has been involved in the organisation over the past 12 months. In particular, we would like to thank:

- Our Board, staff and volunteers
- The Councillors and staff at Yarra City Council
- Our Ambassadors: IKEA and Yarra City Council
- Our Corporate partner: Maddocks Lawyers
- Our Program partners: Bank Australia, Good Shepherd Microfinance, CitySwitch, Livewell Clusters, and SmartBlocks
- Our Community and Expertise partners: the Alternative Technology Association (ATA) Australian Vietnamese Womens' Association (AVWA), the Northern Alliance for Greenhouse Action (NAGA), Positive Charge, Yarra Climate Action Network, Yarra Community Solar



# Volunteers

YEF's work would not be possible without the help of our valued team of volunteers:

Mariela Mendoza  
Rowan Mooney  
Patricia Viera  
Carolina Caraza  
Steven Theunissen



**WINNER:**  
Yarra City Council  
Extraordinary  
Volunteer Contribution  
Award 2016 –  
Rowan Mooney

*The Yarra Energy Foundation acknowledges the Traditional Owners of this country and recognise their continuing connection to land, waters and community. We pay respect to their elders both past and present and acknowledge the pivotal roles that Aboriginal and Torres Strait Islander people continue to play in caring for country across Australia.*





*Most of all, YEF would like to acknowledge the ongoing support of the residents, businesses and local community of the City of Yarra.*



# Highlights (to June 30, 2016)

## Our Commercial Program:



Facilitated 6 rooftop solar PV installations for the period totalling **129kW**



Facilitated 16 LED lighting upgrade projects for the period, totalling **7,921 lights**

We delivered our **Smart Solar Yarra Schools** campaign, and hosted 10 schools at a Q & A resulting in 8 lighting upgrades and solar installations, and delivered estimated savings on energy bills and maintenance of \$130,000 and **852 tonnes of carbon per year**.



We built and launched our **new online platform** using Nationbuilder, that will enable us to engage our community in a more effective and targeted way,



## We delivered our pilot Low Income Retrofit program. The final tally was:

- 50 architects' reports completed
- 50 home energy retrofits completed, including:
  - 46 sets draught seals installed
  - 72 curtains or blinds installed (IKEA)
  - 347 LEDs installed
  - 10 rugs and 14 doonas/blankets provided (IKEA)
  - 48 face-to-face meetings with residents



We strengthened key partnerships with stakeholders including Yarra City Council, IKEA, Bank Australia, the Alternative Technology Association (ATA) and MEFL.

We secured **\$55,072** worth of professional services pro bono.

We reviewed staff skills and **expanded the team** to better meet the needs of the community.



With increased capacity, we moved to a larger office in Bridge Road, Richmond

We were an active partner of the **One Million Homes Alliance** and co-authored '2050 Roadmap: Overcoming the barriers to efficient housing', presented to the Honourable Lily D'Ambrosio



We hosted several successful **events** to help schools, businesses and residents lower their carbon footprint

## Commercial Program

The Yarra Energy Foundation Commercial Program is focused on providing trusted advice and connections to suppliers for the non-residential sector of the City of Yarra, supporting local businesses who want to reduce energy consumption and carbon emissions. Accordingly, distributed generation (solar) and energy efficiency (lighting) are the key platforms. YEF has been developing capacity throughout this period, providing advice on energy procurement and working on models where decarbonised energy supply options may become available.

The YEF Commercial Program was designed and piloted over a 12-month period in consultation with community and industry leaders in order to facilitate investment into solar energy for local businesses. YEF identified that many businesses can benefit from an annual return in excess of 15-20% of the installation cost, depending on the time of energy use, electricity price and available space for installation.



During the period July to December 2015, YEF's Commercial Program underwent a process of review and expansion, broadening the offer from rooftop solar PV and expanding the energy efficient LED lighting upgrades. The panel of preferred suppliers was reduced in number, enabling stronger stakeholder relations and providing partners with more opportunities to win campaign bids. The Program focused on developing a more integrated and engaged partnership approach – one that looks to the strengths of the partners and provides alternatives to the commission-based model of the previous agreements. An upfront funding option with partners for segmented supplier led campaigns is in negotiation.

The first of these campaigns was the Solar in Schools campaign. The model is proving to be successful, with a more collaborative partnership approach streamlining information and service provision. Of the five schools represented at the first event coordinated by YEF, three committed to large lighting and solar installations. Further targeted commercial campaigns in development include Aged Care, Child Care Centres, Furniture Shops and Medical/Dental Centres.



## Commercial Program – Key Outcomes:



Rooftop solar PV installations for the period total 129kW across 6 projects, building on the 100kW from the previous year.



LED lighting upgrades for the period total 7,921 lights across 16 projects.

The YEF Commercial Program in this period accounts for approximately **1,006 tons of carbon emissions** reduced each year.

## Case Study: Jordan Furniture



Jordan is an Australian family-owned furniture business in operation since 1987. Every Jordan piece is crafted to order in Melbourne, with care and precision, by hand. This is made possible by their commitment to quality materials and craftsmanship. Jordan is a company run by two brothers, Nick and Mike Garnham that has grown from humble beginnings with only eight staff in 1997, to over one hundred today.

Jordan's showroom at 522 Church Street Cremorne is estimated to use nearly 57,000 kWh of electricity annually, which is equivalent a carbon footprint of approximately 70 tCO<sub>2</sub>-e.

In early 2016 Jordan worked with Yarra Energy Foundation's commercial team to procure a rooftop solar PV array for their factory and showroom on Church St, Richmond. The solar array is comprised of 74 high quality polycrystalline panels, and along with energy efficiency measures that were implemented, has reduced the amount of grid supplied energy that Jordan consumes by 70%, reducing carbon emissions by approximately 30 tonnes annually.



**WINNER:**  
Sustainability in  
Practice - 2016 Yarra  
Sustainability Awards



**SHORTLIST:**  
2016 Premier's  
Sustainability Awards

### The Outcomes:

**Solar panels installed: 74**  
**Energy supplied from grid reduced: 70%**  
**Emissions reduced: 30 Tonnes CO<sub>2</sub> p.a**

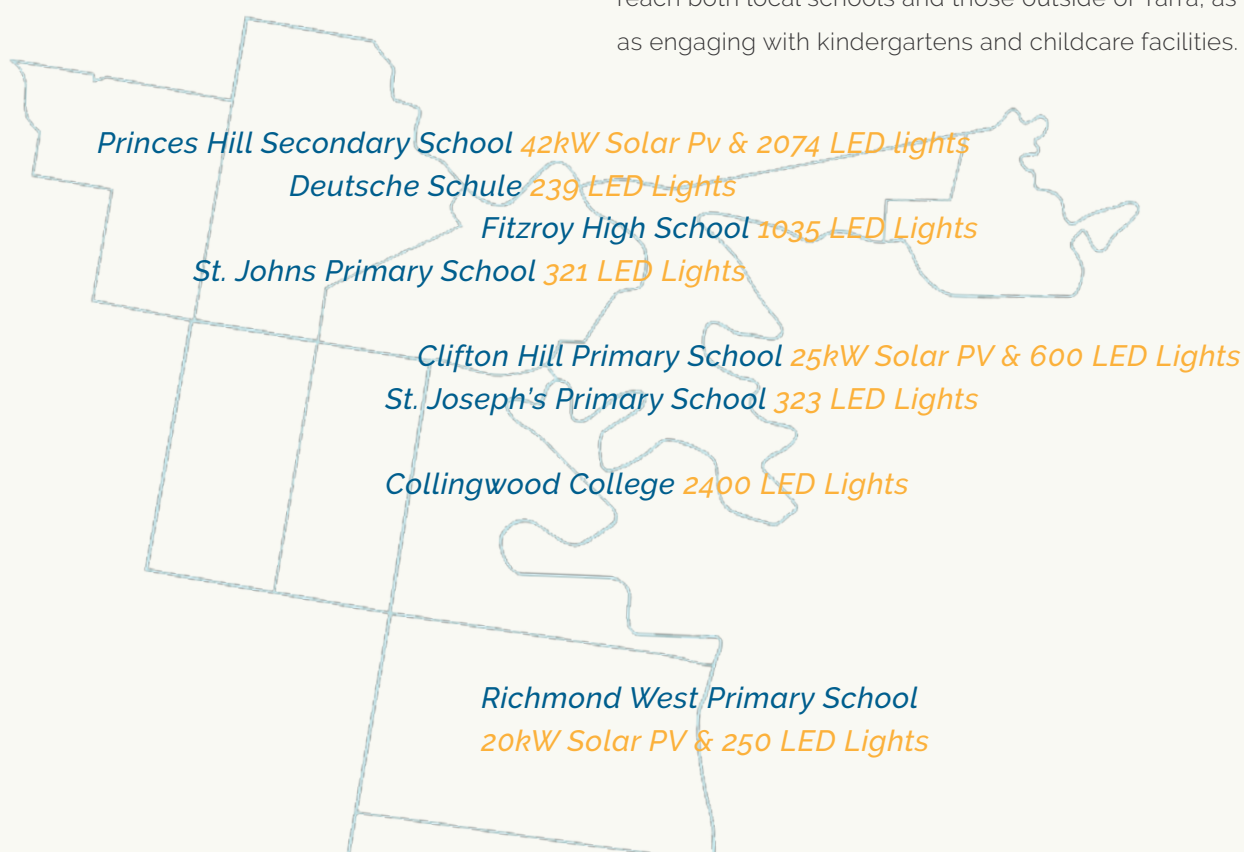
# Commercial Programs: Smart Solar for Yarra Schools



Falling under of YEF's Commercial Program, Smart Solar for Yarra Schools is designed to provide local primary or secondary schools with information on the latest offers, technology, and funding available to help achieve financial and environmental savings.

Throughout this period, YEF held information sessions for teachers, parents, and staff interested in making their school more sustainable, engaging seven local schools to undergo both rooftop solar installations, LED lighting retrofits and energy efficiency measures, delivering an estimated saving of \$130 000 and 850 tonnes of carbon per year.

Smart Solar for Yarra Schools is a continuing to expand a reach both local schools and those outside of Yarra, as well as engaging with kindergartens and childcare facilities.



Total Solar Installations: **87kW**



Total LED Lights installed: **7272**

Since this program was launched by YEF in August 2015, YEF has worked with eight Yarra schools delivering an **estimated saving of \$130 000 and 850 tonnes of carbon per year.**



# Case Study: Richmond West Primary School



## First step: LED Lighting

An important first step for Richmond West PS was replacing their existing lights with LEDs. Over 250 lights were changed resulting in initial savings to lighting costs of 62%. A far more efficient option than fluorescents, this positioned the school well to use solar for the bulk of their ongoing energy needs. LEDs are also rated to last up to 50,000 hours, which considerably reduces ongoing maintenance costs.



## Second Step: Solar

YEF and Cherry Energy Solutions determined that for Richmond, a solar panel installation had potential to dramatically reduce the school's reliance on external energy provision from the grid. A 20kW solar system was installed on the school's roof. As the school uses almost all its energy during daylight hours, solar power can meet the bulk of ongoing energy demands, and provides even more than what is needed during midday hours.

Throughout this period, YEF continued to help Richmond West PS achieve an annual savings of over \$13,000, and annual emission reductions of more than 66 tonnes.

With a desire to minimise their school's carbon footprint, Richmond West wanted to upgrade their existing 5 kW system. Through an installation of an additional 20 kW plus LED retrofits, the school has now saved significantly on energy costs and reduced their carbon emissions by more than 66 tonnes annually.

Richmond West Primary was able to leverage public grants for their lighting and solar upgrade. The school implemented their project via a Sustainable Melbourne Fund repayment plan. The current Federal Incentive program, available through Cherry Energy Solutions, reduced the cost of the solar system by about \$12,000. The overall project was cashflow positive over the life of the funding period.

Through a process of energy efficiency measures combined with a solar installation, Richmond West PS has achieved annual savings of over \$13,000, energy savings of over 52 kWh per year and annual emission reductions of more than 66 tonnes. In addition to this, Richmond West installed LED screens that display the real-time energy use of the school and energy production of the solar panels. This provides a uniquely engaging way of educating students about solar, and bringing a level of excitement to the school community about their achievements of reducing carbon emissions.

## The Outcomes:

**Solar Pv system installed: 20kW**

**LED lights installed: 250**

**Electricity Reduction: up to 100%**

**Total savings p.a: \$13,770.00**

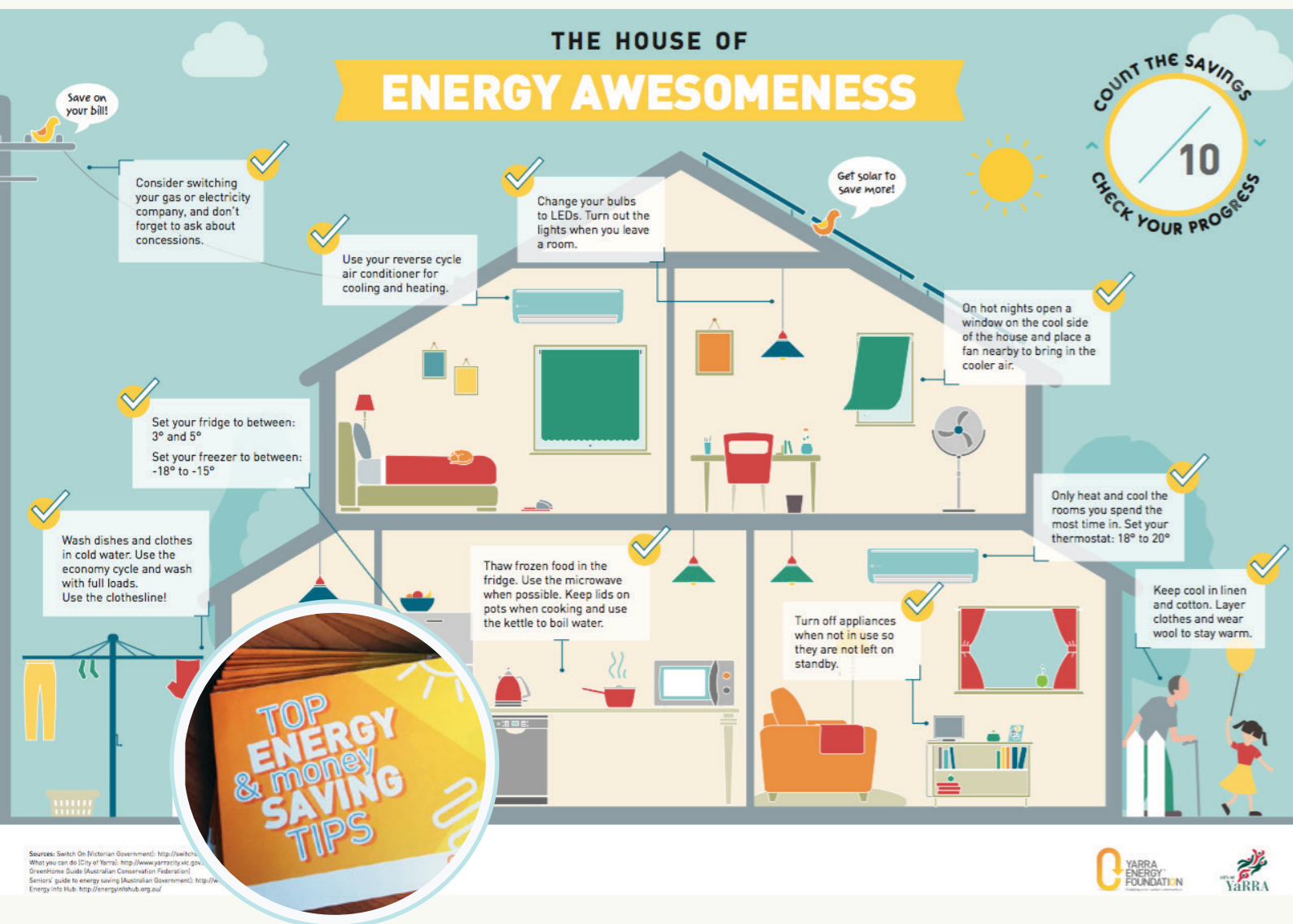
**Emissions reduced: 66.5 tonnes CO<sub>2</sub>**

*"Richmond West Primary School has a history of sustainability. Part of our big picture plan is to reduce the school's footprint across a range of areas such as energy, recycling, water usage, kitchen gardening, composting and increasing active transport across the community. Solar panels and an LED retrofit was seen as the next logical step in achieving these long term goals." - Paul Ledwidge, Principal*

# Residential Program

Throughout this period YEF has continued to assist residents of Yarra reduce their carbon emissions through advice regarding rooftop solar installations, LED lighting retrofits, and energy efficiency education. By connecting residents with preferred suppliers YEF has continued to grow as a trusted source of information within the community.

A key piece of educational material that was developed by YEF in early 2016 was a fold out poster detailing measures that residents can take to reduce energy consumption within their homes, and therefore lowering their carbon footprint. These posters were delivered to participants of our programs and were well received. A digital interactive version of the poster is in development, and is due to be released in early 2017 alongside our website.



The Yarra Energy Foundation is committed to helping our community transition to zero carbon economy in the most equitable way possible. Access to local renewable energy will increase the resilience of our community, soften the impact of energy price shocks, and reduce our collective carbon footprint.

As part of this mission towards a carbon zero future, YEF is continuing to work with local community organisations, aged care facilities, sporting groups and churches to further reduce Yarra's carbon emissions. In the leadup to a solar bulk buy in late 2016, throughout this period YEF started important groundwork in identifying key groups within Yarra's residents that are in need of the most assistance when lowering their energy usage. Targeted programs are in development within the public housing sector, as well as with other specific residential groups such as culturally diverse communities and renters or apartment dwellers who may be unable to make changes to their homes.

## Residential Programs: Low Income Retrofit Program

Early in 2015 YEF submitted a residential solar funding proposal for \$100,000 for consideration in the City of Yarra budget round for 15/16, and were awarded \$80,000.

The subsequent Low Income Residential Project (LIRP, known externally as the Home Energy Retrofit Program) ran as a pilot project implementing a tailored residential program, working closely with council to reach our target audience – low-income residents, and pensioners who own their own home. In targeting this demographic, YEF delivered a practical program to a group often hardest hit by increasing energy costs.



The City of Yarra is primarily young, single, educated, and affluent. However, Yarra has a significant population of vulnerable residents. This program focused on low income homeowners, which include the aged and those with disabilities.

The program drew on Council resources via HACC and Sustainability teams, and local media, newsletters, and social media to reach these residents. 279 letters were sent directly from Yarra City Council to residents from the HACC database, with 90 people responding. The program was able to expand from an initial 40 homes to 50 after discussions with partners, but 40 people remain on the waiting list.

### *Eligible homeowners received a suite of free services including:*

- a home inspection from a licensed architect;
- installation of high quality lighting, IKEA curtains, blinds, rugs and blankets to improve comfort in hot summer weather and cold winter weather;
- door seals to prevent draughts (warm air escaping in the winter or cool air escaping in the summer) on front and back doors;
- information on easy tips to reduce energy bills and make their homes more comfortable everyday; and,
- analysis of their electricity bills through the Victorian government energy compare website.

*The program aimed to help residents reduce their energy bills, improve their home's comfort, and contribute to bettering the environment.*



# LIRP Program outcomes at a glance

## Partners

23 program partners contacts engaged and directly contributing to LIRP

MOUs or project agreements signed with 6 program delivery partners

5 valued partners:



Funding received from Yarra City Council  
\$80 000

Total program cost per household:  
\$1600 + \$550  
in-kind/donations from our partners

## Participants

279 letters sent directly from Yarra City Council to residents from the HACC database as part of a targeted recruitment campaign

50 program participants selected

50 home inspections completed and architects' reports produced

50 home energy retrofits completed

50 energy bills analysed and potential loans discussed

40 residents on waitlist

Countless cups of tea and biscuits shared

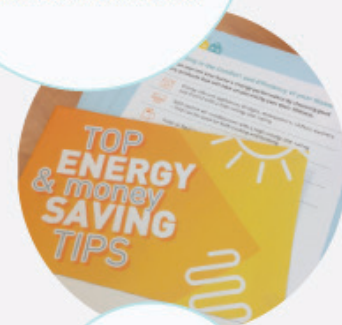
## Engagement

21 invitees and 16 attendees to the low income retrofit program workshop



Weekly Twitter and Facebook updates reaching thousands of followers

200 energy efficiency tips brochures and financing options documents distributed



4 volunteers working part-time



Greenhouse gas emissions abated = 93 tonnes per year



# Residential Advocacy: One Million Homes Alliance

As part of our Residential Program, YEF has been working with an alliance of social, consumer and environment groups calling on the Victorian Government to make significant changes and support work to improve the energy and water efficiency of One Million Homes across Victoria.



Efficient homes make good sense. Saving energy and water cuts the cost of living, particularly for the growing number of households struggling to pay soaring utility bills. Efficient homes are more comfortable and healthier to live in, particularly in extreme weather. Investing in efficiency creates thousands of jobs and postpones or avoids the need for costly additional supply. And reducing consumption cuts greenhouse pollution and saves water for our rivers.

The One Million Homes Alliance welcomes the Victorian government's vision, described in the June 2015 energy efficiency statement, for an "efficient, productive and resilient state". This Roadmap brings together the knowledge and experience of Victoria's leading consumer, social and environmental organisations to outline our plan for turning this vision into reality.

Delivering this Roadmap will see all Victorians, including the most vulnerable, benefit from more efficient homes. It will unlock billions of dollars of investment, supporting up to 13,000 jobs (gross) over the 10 year program and 8,500 ongoing jobs. An average household should save around \$1,000 a year on energy bills, while the government could save \$2.5 billion from its energy concessions budget over 20 years.

And by focusing on creating a stable policy environment which leverages investment from a range of sources, while targeting government assistance to the most vulnerable, this Roadmap ensures government investment delivers high-impact outcomes.

## *The Goal:*

- |                              |   |
|------------------------------|---|
| 1. Improve standards         | Build on the Vic Residential Efficiency Scorecard & regulate minimum performance. |
| 2. Facilitate finance        | Establish accessible and affordable finance to drive efficiency upgrades.         |
| 3. Raise public awareness    | Provide information about the benefits of energy efficiency.                      |
| 4. Deliver Targeted Programs | Provide meaningful support to those most in need across Victoria.                 |

# Engagement: Digital

Early 2016 saw the development of a new Digital Engagement Strategy, the result of the creation of new position within the organisation – The Digital Engagement Manager. The cornerstone of this strategy is the new YEF website, which is hosted on Nationbuilder. This sophisticated platform acts as both a Customer Relationship Manager (CRM) and a Content Management System (CMS). YEF is now able to capture data on who is engaging with our information and content via social media, and begin to build relationships with supporters based on activity and preference. This will play a vital role in building our fundraising capacity, ensuring we build our profile and our database of supporters to reach out to. We will be able to better target communications and engagement based on the profiles that we can slowly build of our supporters.

The new website will also work to improve our social media engagement, forming a clear, informative foundation that we can continue to refer our audience back to. Our programs will have a stronger presence through more regular and insightful updates, and our events will receive greater coverage and publicity.

With a core focus of Twitter and Facebook, YEF continues to build an engaged audience on social media. Regular posting of high quality photography, video and written content act to paint a local, community driven picture of Yarra – dissolving the divide that can often arise between an audience and an organisation dealing with the facts and figures around energy consumption.

**JUN 2016 SUMMARY**

Tweets	38	Tweet Impressions	17.5K
Profile visits	1,000	Mentions	32

**MAY 2016 SUMMARY**

Tweets	40	Tweet Impressions	23.2K
Profile visits	733	Mentions	16

**THE FACTS - CURRENT EMISSIONS**

Rollover postcodes to get the lowdown on Yarra's current emissions and much more.

**SOLAR POWERED BREAKFAST FOR LOCAL BUSINESSES**

Join us for a free solar powered breakfast, meet other Yarra businesses and hear how you can go solar to save your business money and reduce carbon.

WTA RICHMOND • 2 JUNE 2016 • 8:30AM - 10AM • FREE • BOOK NOW

**Get More Likes, Comments and Shares**

When you boost this post, you'll show it to more people.

901 people reached

**Get More Likes, Comments and Shares**

When you boost this post, you'll show it to more people.

1,108 people reached

Since the new digital platform was launched, supporters actively engaged with YEF has risen to a total of **3478**, and is growing rapidly.



## Engagement: Community and Stakeholder

YEF's engagement within the community continued to grow throughout this period, with increased participation in local, State and Federal consultation forums as well as requests to attend and speak at relevant sector events and conferences. The LIRP program in particular was highly collaborative and was supported by a number of key partners, including the City of Yarra, IKEA, Good Shepherd Microfinance, Archicentre, and the ATA. Relationships were also built with preferred technology providers and installers such as Energy Makeovers and The Good Guys. In December 2015, YEF hosted a small and focused workshop of key stakeholders and advisors to test the project direction and garner support. Mayor Colanzi and Cr Coleman were in attendance, along with City of Yarra staff and external program stakeholders, including:

- Mayor Roberto Colanzi
- Cr Misha Coleman
- Sally McAdams - Sustainability Officer, YCC
- Michael Oke - Coordinator - Environmental Management, YCC
- Adrian Murphy - Manager Aged & Disability Services, YCC
- Steven Polidoras - Home Maintenance Program Leader, YCC
- Victoria Johnson - Research and Policy Manager, Brotherhood of St. Laurence
- Damian Sullivan - Senior Manager, Energy, Equity and Climate Change, Brotherhood of St. Laurence
- Chandra Sundareswaran - Business Sustainability Manager, MEFL
- Dean Kline - Community Energy Efficiency Engagement Officer, Hume City Council
- Jim Downey - Senior Manager E&FI, Kildonan UnitingCare
- Richard Keech - Ecomaster Engineer, BZE/Ecomaster

*YEF has continued to grow its important relationship with key stakeholder **Yarra City Council**. It is through this ongoing support that YEF is able to implement its most meaningful programs.*

The LIRP Program also allowed a high level of community engagement, with YEF staff visiting participants in their homes to discuss ways in which they can reduce energy usage, lowering bills and increasing comfort. Much tea and cake was consumed, and many life stories heard – forging a strong relationship being YEF and the local community. It was a poignant reminder for YEF staff of the importance of their work in the day-to-day lives of people in Yarra.



## Events

### Commercial Program Event Series

The YEF Business event series, supported by the City of Yarra's Economic Development Team, had a successful series of events, including a breakfast hosted by IKEA on June 2nd that focused on rooftop solar. The event was well attended, with approximately 60 people, and featured speakers from IKEA, Canadian Solar and Bank Australia.

### High Life Expo

On June 22 2016, YEF co-produced the High Life Expo in partnership with the City of Melbourne, Smart Blocks, the Alternative Technology Association, City of Stonnington, City of Port Phillip, and City of Moonee Valley. The event attracted approximately 450 attendees, including apartment owners and renters, owners' corporation managers and facility managers, and covering topics including energy efficient and solar solutions for apartment dwellers.



*A post event survey found that 91% of attendees found the High Life Expo to be excellent or very good. Overall the expo was a great success, and 98% of post-event survey respondents felt that continuing the annual event would be valuable or very valuable as a support mechanism for the apartment sector.*

## People & Culture

The 2015 – 2016 period was one of great change for YEF. Ned Halliday and Claire Havens joined the team in late 2015, with Jacqui Hagen coming on board in early 2016. Growing capacity and an increasing number of volunteers made the need for a larger space apparent, and so YEF moved to a new premises on Bridge Road in Richmond in June 2016, allowing convenient access to Council staff and further enhancing collaboration.

It was with sadness that YEF said goodbye to Ned Halliday in June 2016, who went on to take a position that reflects his good work at YEF. In a short time, he has been an asset to the organisation and the team will miss his 'can-do' attitude and optimistic approach to our work.



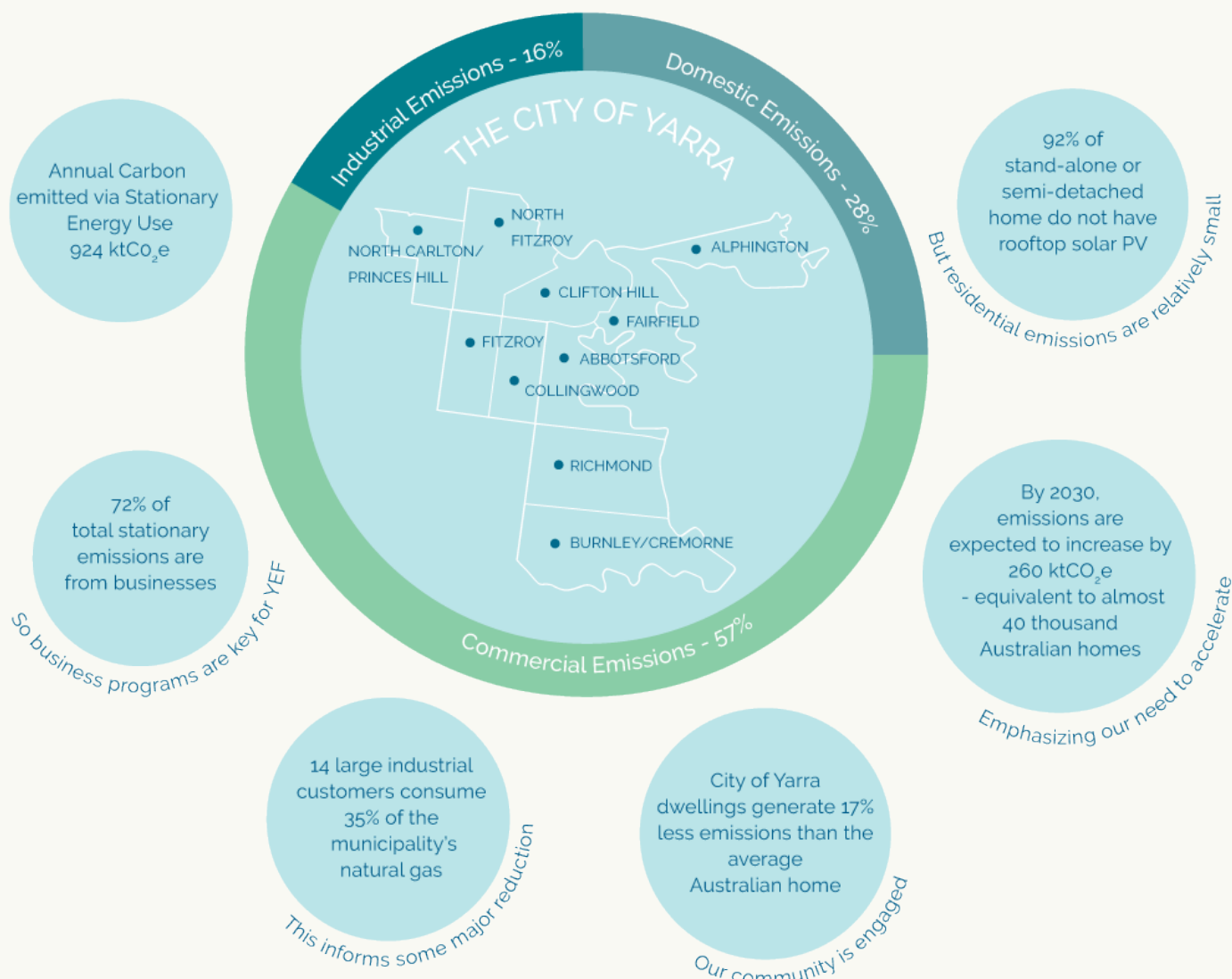


# Measuring Carbon

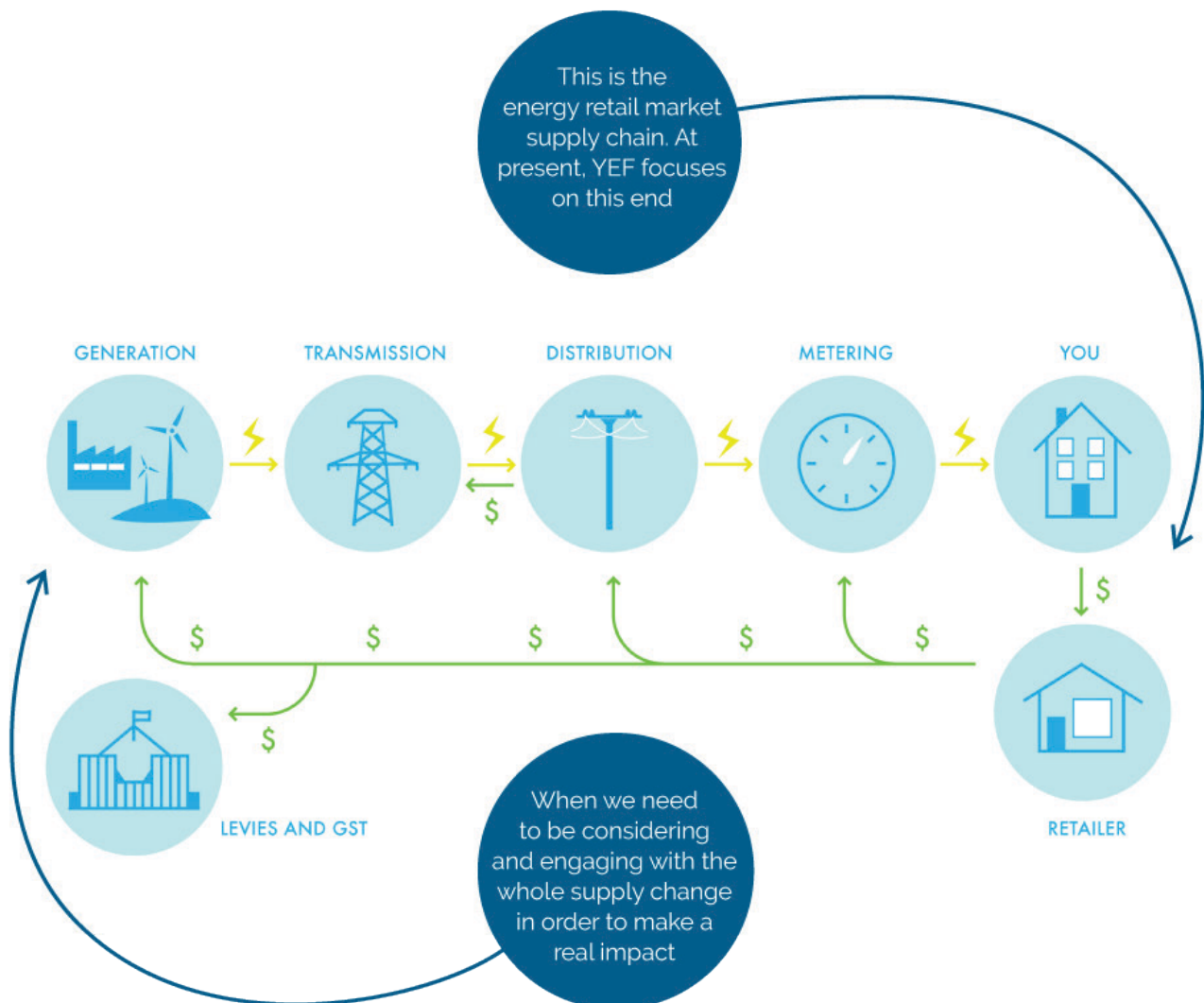
Accurately measuring the municipality's carbon footprint continues to prove to be a challenge in the City of Yarra, and is an ongoing challenge for Councils within NAGA and other leading Councils such as the City of Melbourne. YEF's preliminary analysis on data received by the Northern Alliance for Greenhouse Action (NAGA) indicated an overall increase in emissions, with significant improvements made to efficiency and intensity. However, this is inconsistent with recent data from Citipower that seems to indicate that this is not the case (the raw data seems to indicate a decrease).

*In an effort to capture, measure and understand the City of Yarra's current stationary emissions profile, YEF engaged ARUP to deliver a report. This report identifies emission 'hotspots', provides carbon emission projections for 2020 and 2030, and help the organisation deploy limited resources strategically, and identify opportunities across the municipality.*

The ARUP report showed that a large portion of Yarra's emissions come from the Commercial Sector, highlighting the importance of expanding YEF's Commercial Program in coming years. The report also showed that a small percentage of Yarra homes have rooftop solar compared to the rest of Australia, but this could be attributed to a high number of renters, apartment dwellers, and medium-density housing stock. Additionally, it was found that Yarra homes generate less emissions than the average Australian home.



The ARUP Report also highlighted the need to accelerate action to reduce carbon in the city of Yarra, and emphasized the need to look beyond rooftop solar as a solution. **When projecting carbon emissions it is clear that decarbonising energy supply is the only way to have a sizeable impact upon Yarra's carbon footprint.** That is, large scale renewable energy projects outside of the municipality that can provide Yarra with a clean, sustainable energy source.



## Looking Forward

As our engagement and profile grows, YEF needs to ensure we develop programs that target the diverse range of constituents throughout the City of Yarra. This includes developing and implementing programs for:

- Low-income residents and pensioners
- CALD communities – building on the successful implementation of the Vietnamese Community program
- Renters
- Identifying innovative ways to connect business and people to clean energy
- Continuing to lift the awareness and profile of YEF in the City of Yarra and beyond
- Raising vital funds to continue and expand our work

# Financial Tables

## STATEMENT OF PROFIT OR LOSS AND OTHER COMPREHENSIVE INCOME FOR THE YEAR ENDED 30 JUNE

	2016	2015
	\$	\$
<b>Continuing operations</b>		
Revenue	417,069	408,856
EXPENSES		
Employee benefits expense	(288,218)	(233,593)
Project expenses	(41,064)	(53,916)
General and administration expense	(115,861)	(98,915)
Depreciation and amortisation expense	(674)	(433)
Other expenses	(325)	-
<b>(Loss)/Profit before income tax</b>	<b>(29,074)</b>	<b>22,000</b>
Tax expense	-	-
<b>Net (Loss)/Profit for the year</b>	<b>(29,074)</b>	<b>22,000</b>
Other comprehensive income	-	-
<b>Total comprehensive income for the year</b>	<b>(29,074)</b>	<b>22,000</b>

## STATEMENT OF CASH FLOWS FOR THE YEAR ENDED 30 JUNE 2016

	2016	2015
	\$	\$
<b>CASH FLOWS FROM OPERATING ACTIVITIES</b>		
Receipts from grants and commissions	454,903	427,769
Payments to suppliers and employees	(453,456)	(432,986)
Dividends received	-	-
Interest received	4,487	4,911
Net cash provided by/(used in) operating activities	5,933	(306)
<b>CASH FLOWS FROM INVESTING ACTIVITIES</b>		
Purchase of property, plant and equipment	(1,200)	-
Net cash provided by/(used in) investing activities	(1,200)	-
Net increase/(decrease) in cash held	4,733	(306)
Cash and cash equivalents at beginning of financial year	38,554	38,860
Effect of exchange rates on cash holdings in foreign currencies	-	-
Cash and cash equivalents at end of financial year	43,287	38,554



## STATEMENT OF FINANCIAL POSITION AS AT 30 JUNE 2016

	2016	2015
	\$	\$
<b>ASSETS</b>		
<b>CURRENT ASSETS</b>		
Cash and cash equivalents	43,287	38,554
Trade and other receivables	-	16,481
Other assets	4,986	6,848
<b>TOTAL CURRENT ASSETS</b>	<b>48,273</b>	<b>61,882</b>
<b>NON-CURRENT ASSETS</b>		
Property, plant and equipment	1,907	1,706
<b>TOTAL NON-CURRENT ASSETS</b>	<b>1,907</b>	<b>1,706</b>
<b>TOTAL ASSETS</b>	<b>50,180</b>	<b>63,588</b>
<b>LIABILITIES</b>		
<b>CURRENT LIABILITIES</b>		
Trade and other payables	29,753	19,443
Provisions	9,676	4,604
<b>TOTAL CURRENT LIABILITIES</b>	<b>39,429</b>	<b>24,047</b>
<b>NON-CURRENT LIABILITIES</b>		
Provisions	336	53
<b>TOTAL NON-CURRENT LIABILITIES</b>	<b>336</b>	<b>53</b>
<b>TOTAL LIABILITIES</b>	<b>39,765</b>	<b>24,100</b>
<b>NET ASSETS</b>	<b>10,415</b>	<b>39,488</b>
<b>EQUITY</b>		
Retained earnings	10,415	39,488
<b>TOTAL EQUITY</b>	<b>10,415</b>	<b>39,488</b>

*Abridged Financial Statements*

*These abridged financial statements are prepared from the full audited financial statements. A complete set of financial statements is available from the YEF office via [information@yef.org.au](mailto:information@yef.org.au). Yarra Energy Foundation ABN: 31 145 846 09*

Yarra Energy Foundation  
L1, 319 Bridge Road, Richmond VIC 3121

E • [information@yef.org.au](mailto:information@yef.org.au)  
T • 03 9429 6070  
[yef.org.au](http://yef.org.au)



Yarra Energy Foundation

L1, 319 Bridge Road, Richmond VIC 3121

E • [information@yef.org.au](mailto:information@yef.org.au)

T • 03 9429 6070

[yef.org.au](http://yef.org.au)

